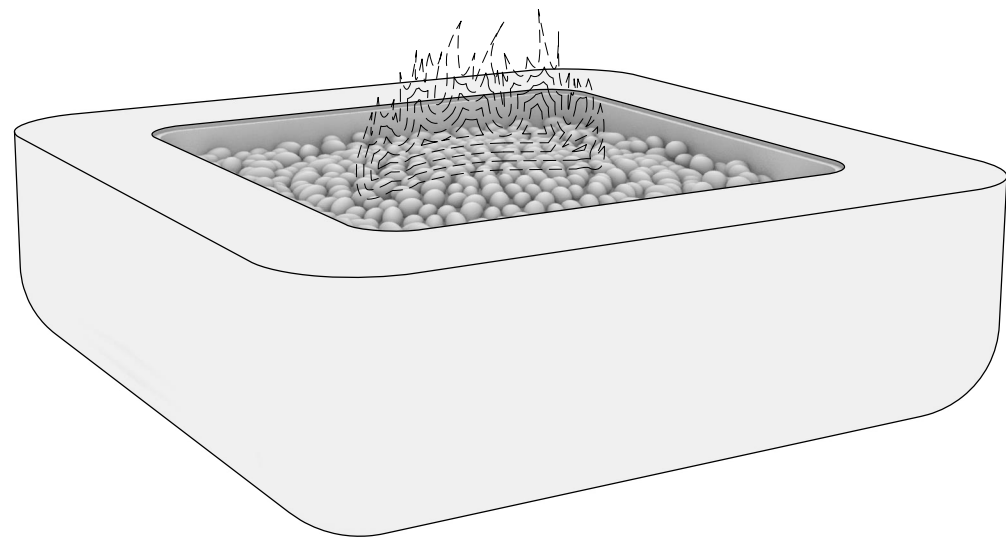
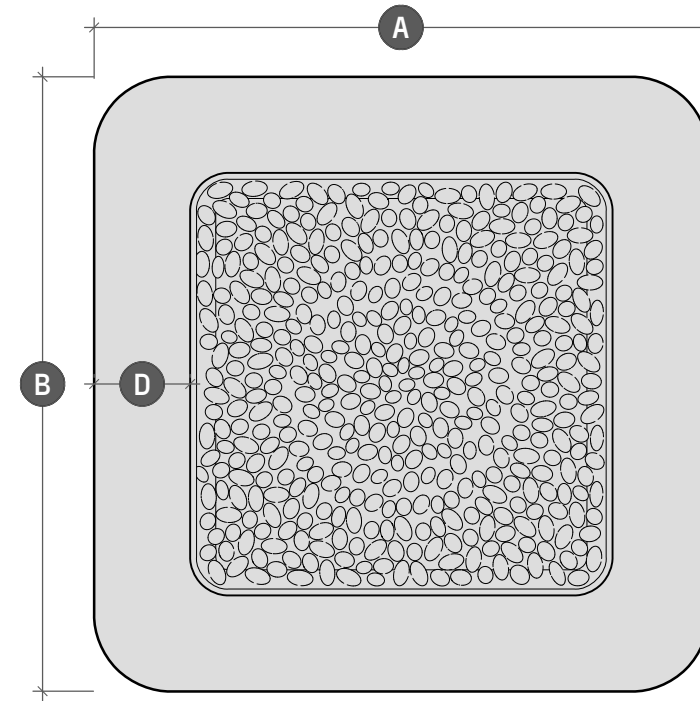


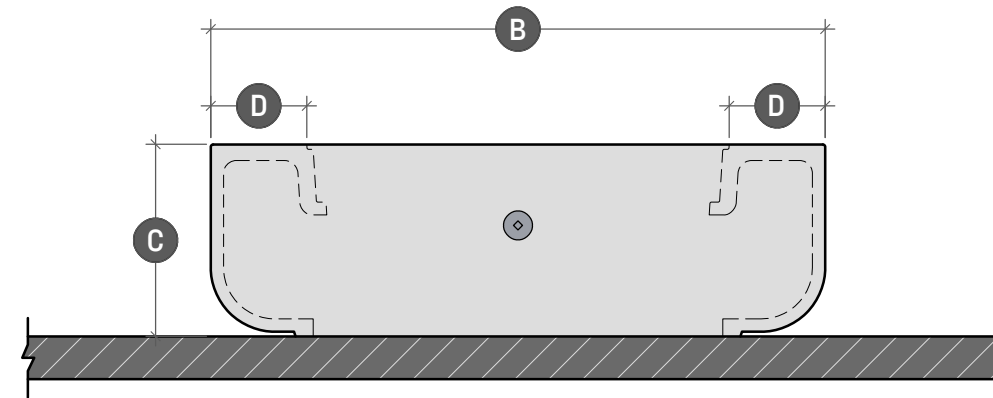
# RAIO FIRE TABLE



RA.1.1 PERSPECTIVE VIEW  
SCALE: NA



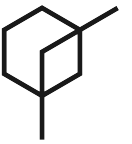
RA.1.2 PLAN VIEW  
SCALE: 1" = 1' - 3"



RA.1.3 SIDE ELEVATION  
SCALE: 1" = 1' - 3"

	RAIO 36	RAIO 42*	RAIO 48	RAIO 52
Length	A - 36"	A - 42"	A - 48"	A - 52"
Width	B - 36"	B - 42"	B - 48"	B - 52"
Height	C - 13"	C - 13   15"	C - 15"	C - 15"
Surface	D - 5 1/2"	D - 6 1/2"	D - 7 1/2"	D - 9 1/2"

	*AVAILABLE IN STANDARD OR low
	Standard height is 15" Low height is 13"



**LUMACAST**

3261 National Ave  
San Diego, CA 92113  
t: +1 888 710 1026  
www.lumacast.com

**PROJECT INFORMATION**

PROJECT:  
LUMACAST FIRE TABLE  
RAIO

DESIGNER:  
LUMACAST

**DRAWING INFORMATION**

DRAWING PACKAGE:  
2D SHOP DRAWINGS  
SHEET CONTENTS:  
COVER SHEET

**MORE INFORMATION**



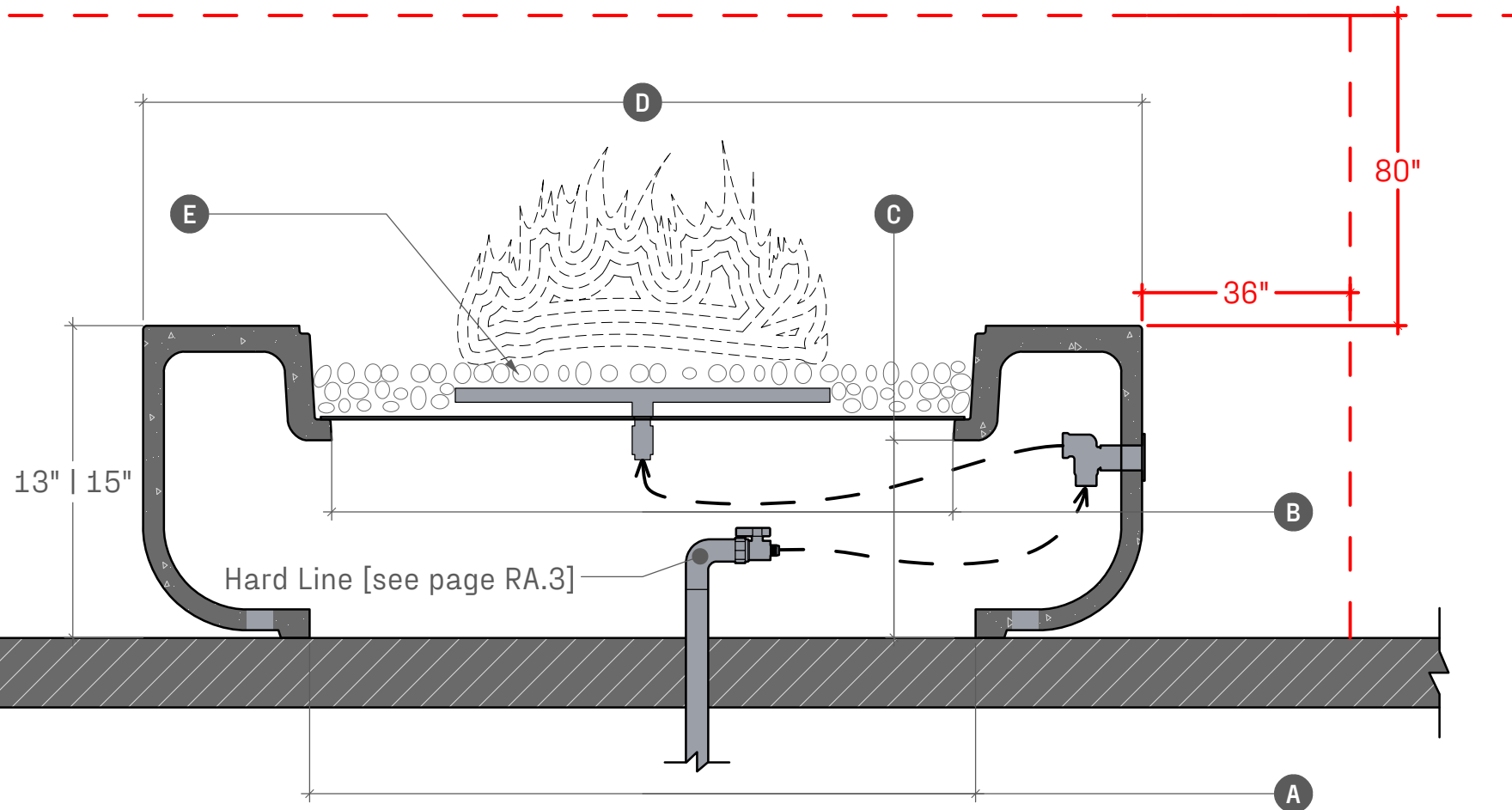
SCAN TO LEARN MORE

AUTHOR      AUTHOR  
EGI          10/23

**RA.1**

SHEET NO

**MINIMUM CLEARANCES TO COMBUSTIBLES**



RA.2.1 SECTION DETAIL  
SCALE: 1" = 0' - 8"

	RAIO 36	RAIO 42*	RAIO 48	RAIO 52
<b>Opening at Base</b>	A - 18"	A - 24"	A - 30"	A - 34"
<b>Burner Pan Access</b>	B - 21"	B - 25"	B - 30"	B - 30"
<b>Burner Pan Height</b>	C - 8"	C - 8"	C - 10"	C - 10"
<b>Length</b>	D - 36"	D - 42"	D - 48"	D - 52"
<b>Burner Options</b>	E - - -	E - - -	E - - -	E - - -
Stainless Steel Burner	<b>88,000 BTU</b>	<b>95,000 BTU</b>	<b>150,000 BTU</b>	<b>150,000 BTU</b>
Warming Trands Burner	<b>120,000 BTU</b>	<b>140,000 BTU</b>	<b>180,000 BTU</b>	<b>180,000 BTU</b>
<b>Crated Dimensions</b>	39"x39"x23"	45"x45"x23"	51"x51"x23"	56"x56"x23"
<b>Shipping Weight</b>	- 450 LBs	- 580 LBs	- 725 LBs	- 725 LBs
<b>Shell Weight</b>	- 230 LBS	- 280 LBs	- 335 LBs	- 375 LBs

**! WARNINGS !**

FOR OUTDOOR USE ONLY

POTENTIAL CARBON MONOXIDE HAZARD

Do not store or use flammable liquids in the vicinity of this product

To be installed by licensed plumber or contractor

**TYPICAL CLEARANCES**

36" of clearance from the side elevations of the fire table

80" of clearance from the top surface of the fire table

**NATURAL GAS SUPPLY**

Ensure that the service supplying the fire feature is fitted with a positioned shut off valve that is easily accessible

**SUPPLY PRESSURE**

Minimum - 3.5" WC

Normal - 7.0" WC

Maximum - 14.0" WC (1/2psi)

- - -

Check with local inspector if any further specifications are required for permitted installations



**LUMACAST**

3261 National Ave  
San Diego, CA 92113  
t: +1 888 710 1026  
www.lumacast.com

**PROJECT INFORMATION**

PROJECT:  
LUMACAST FIRE TABLE  
RAIO

DESIGNER:  
LUMACAST

**DRAWING INFORMATION**

DRAWING PACKAGE:  
2D SHOP DRAWINGS  
SHEET CONTENTS:  
SPECIFICATIONS

**MORE INFORMATION**

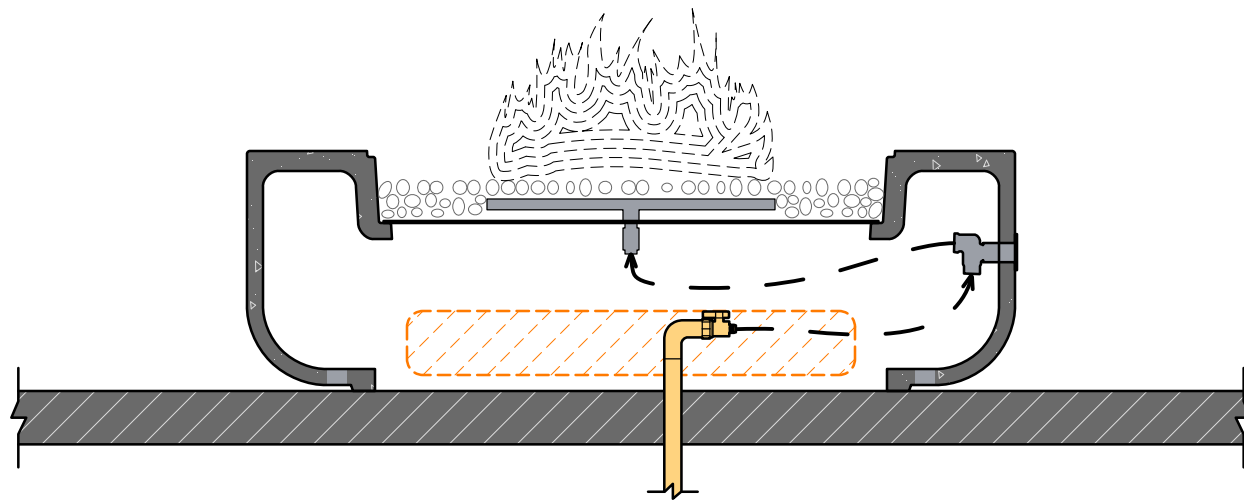


SCAN TO LEARN MORE

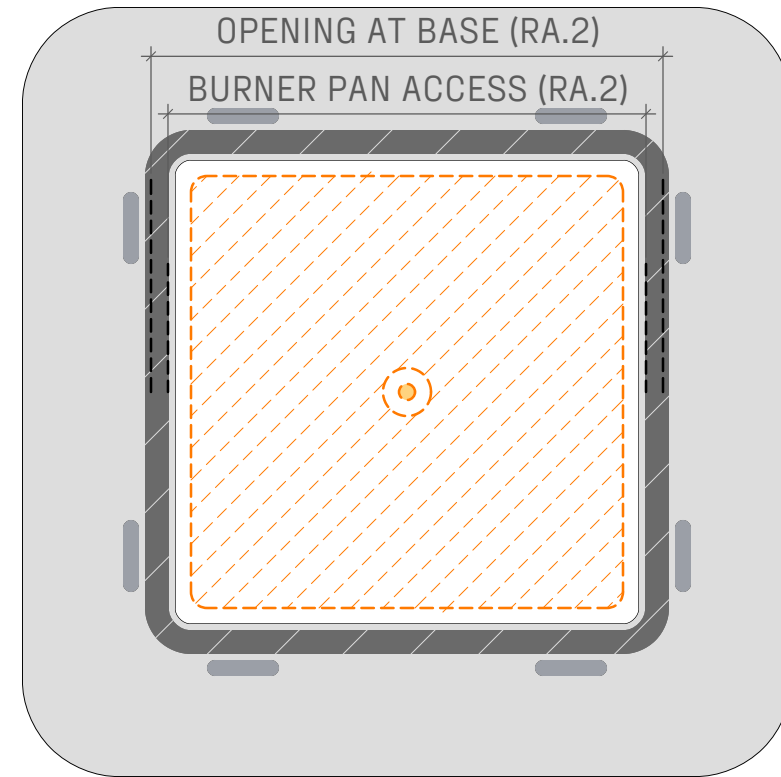
AUTHOR AUTHOR  
EGI 10/23

**RA.2**

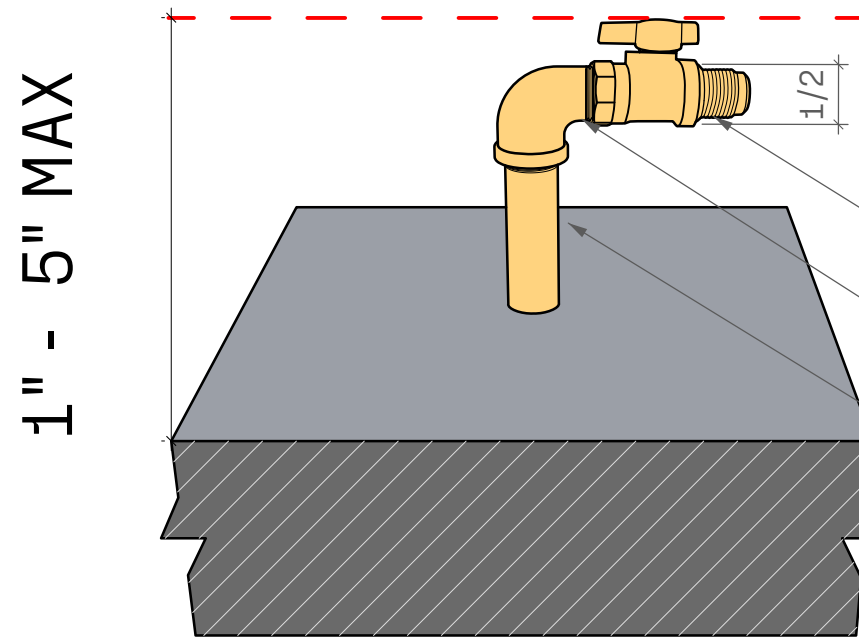
SHEET NO



RA.3.1 SIDE SECTION  
SCALE: 1" = 1' - 0"



RA.3.2 PLAN VIEW  
SCALE: 1" = 1' - 0"



RA.3.3 PERSPECTIVE  
SCALE: n/a

- BRASS FNPT X FLARE GAS BALL VALVE: 1/2" STREET ELBOW
- GALVANIZED NIPPLE 3/4" - 1" DEPENDING ON BTU SEE PLUMBER

**PLUMBING HARD LINE**

For successful installation, hardline stub up should be capped off between 1" and 5" off finished floor.

Lumacast White Glove Delivery and Installation can only be done on IPS Piping



**LUMACAST**

3261 National Ave  
San Diego, CA 92113  
t: +1 888 710 1026  
www.lumacast.com

**PROJECT INFORMATION**

PROJECT:  
LUMACAST FIRE TABLE  
RA10

DESIGNER:  
LUMACAST

**DRAWING INFORMATION**

DRAWING PACKAGE:  
2D SHOP DRAWINGS  
SHEET CONTENTS:  
HARDLINE DIAGRAM

**MORE INFORMATION**



SCAN TO LEARN MORE

AUTHOR	AUTHOR
EGI	10/23

**RA.3**

SHEET NO