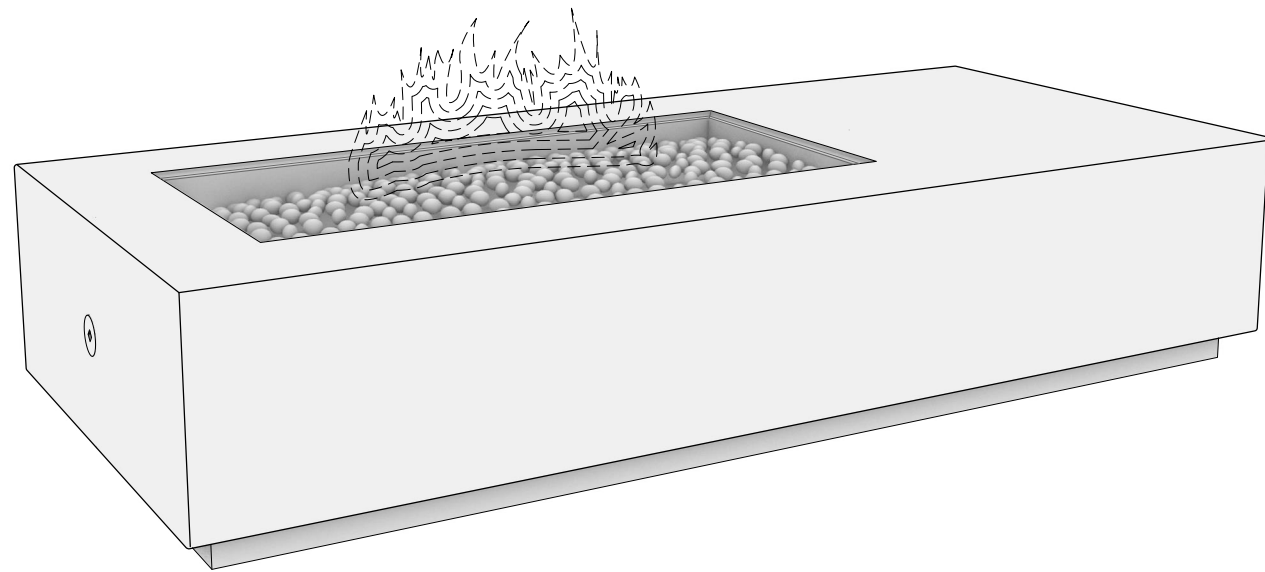
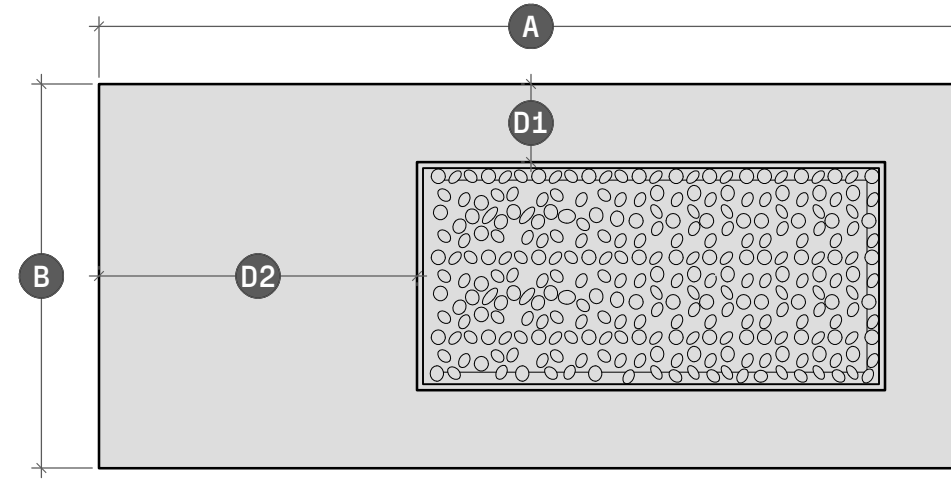


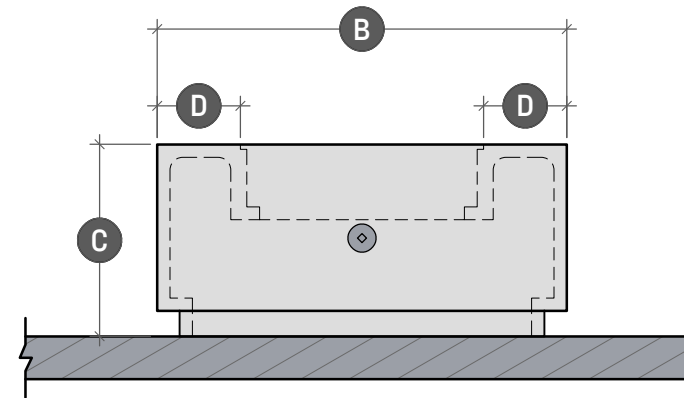
# BLOC offset FIRE TABLE



BLo.1.1 PERSPECTIVE VIEW  
SCALE: NA



BLo.1.2 PLAN VIEW  
SCALE: 1" = 1' - 3"



BLo.1.3 SIDE ELEVATION  
SCALE: 1" = 1' - 3"

	BLOC offset 62	BLOC offset 72	BLOC offset 82
Length	A - 62"	A - 72"	A - 82"
Width	B - 32"	B - 32"	B - 32"
Height	C - 15"	C - 15"	C - 15"
Surface	D - 6 1/2" - 21"	D - 6 1/2" - 26 1/2"	D - 6 1/2" - 26 1/2"



**LUMACAST**

3261 National Ave  
San Diego, CA 92113  
t: +1 888 710 1026  
www.lumacast.com

**PROJECT INFORMATION**

PROJECT:  
LUMACAST FIRE TABLE  
BLOC offset

DESIGNER:  
LUMACAST

**DRAWING INFORMATION**

DRAWING PACKAGE:  
2D SHOP DRAWINGS  
SHEET CONTENTS:  
COVER SHEET

**MORE INFORMATION**



SCAN TO LEARN MORE

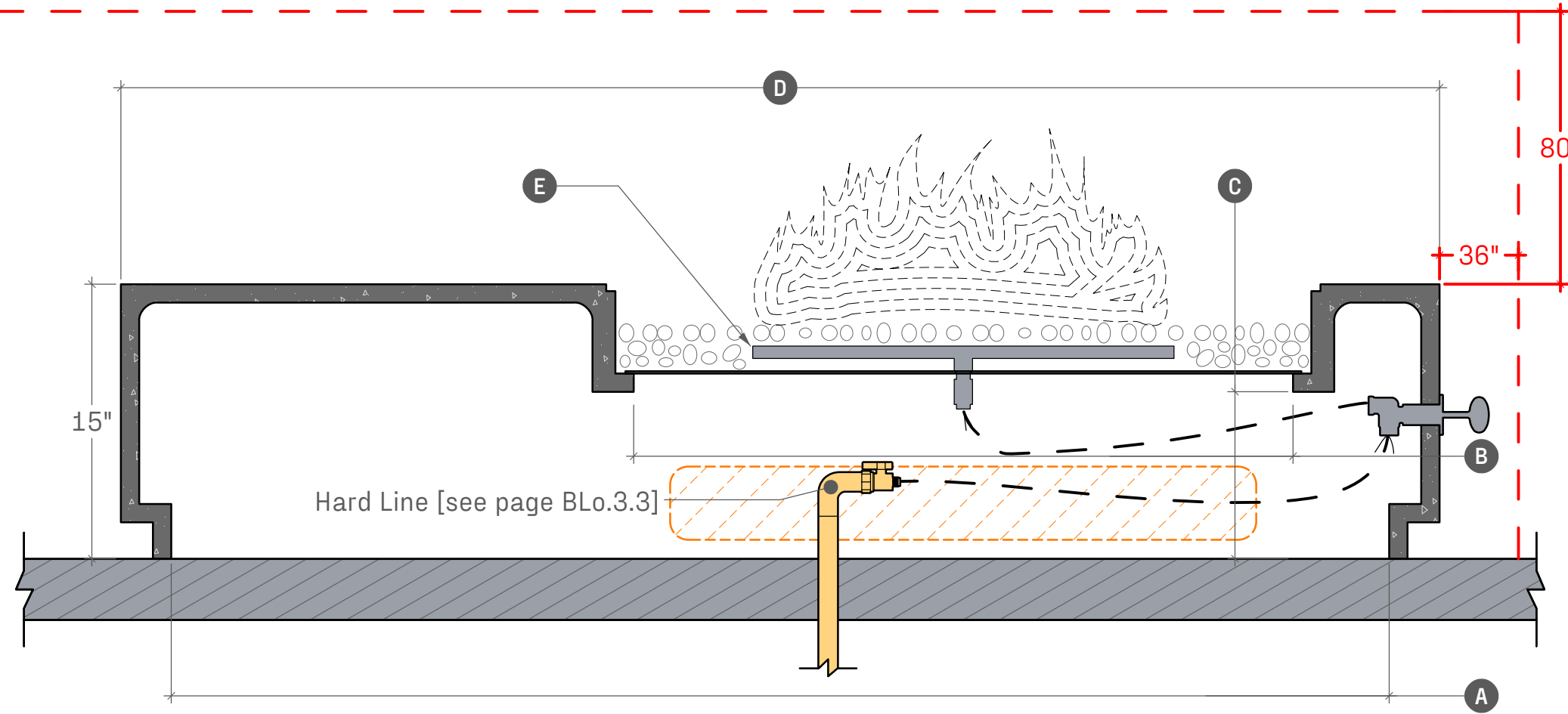
AUTHOR	AUTHOR
EGI	09/23

**BLo**

**.1**

SHEET NO

**MINIMUM CLEARANCES TO COMBUSTIBLES**



BLo.2.1 SECTION DETAIL  
SCALE: 1" = 0' - 8"

**WARNINGS**

FOR OUTDOOR USE ONLY

POTENTIAL CARBON MONOXIDE HAZARD

Do not store or use flammable liquids in the vicinity of this product

To be installed by licensed plumber or contractor

**TYPICAL CLEARANCES**

36" of clearance from the side elevations of the fire table

80" of clearance from the top surface of the fire table

**NATURAL GAS SUPPLY**

Ensure that the service supplying the fire feature is fitted with a positioned shut off valve that is easily accessible

**SUPPLY PRESSURE**

Minimum - 3.5" WC

Normal - 7.0" WC

Maximum - 14.0" WC (1/2psi)

---

Check with local inspector if any further specifications are required for permitted installations

	BLOC offset 62	BLOC offset 72	BLOC offset 82
<b>Opening at Base</b>	<b>A</b> - 56" x 26"	<b>A</b> - 66" x 26"	<b>A</b> - 76" x 26"
<b>Burner Pan Access</b>	<b>B</b> - 32" x 16"	<b>B</b> - 36" x 16"	<b>B</b> - 46" x 16"
<b>Burner Pan Height</b>	<b>C</b> - 9"	<b>C</b> - 9"	<b>C</b> - 9"
<b>Length</b>	<b>D</b> - 62" x 32"	<b>D</b> - 72" x 32"	<b>D</b> - 82" x 32"
<b>Burner Options</b>	<b>E</b> ---	<b>E</b> ---	<b>E</b> ---
Stainless Steel Burner	50,000 BTU	60,000 BTU	75,000 BTU
Warming Trands Burner	90,000 BTU*	110,000 BTU*	170,000 BTU
<b>Crated Dimensions</b>	65"x35"x23"	75"x35"x23"	85"x35"x23"
<b>Shipping Weight</b>	550 LBs	600 LBs	650 LBs
<b>Shell Weight</b>	300 LBs	350 LBs	400 LBs



**LUMACAST**

3261 National Ave  
San Diego, CA 92113  
t: +1 888 710 1026  
www.lumacast.com

**PROJECT INFORMATION**

PROJECT:  
LUMACAST FIRE TABLE  
BLOC offset

DESIGNER:  
LUMACAST

**DRAWING INFORMATION**

DRAWING PACKAGE:  
2D SHOP DRAWINGS  
SHEET CONTENTS:  
SPECIFICATIONS

**MORE INFORMATION**



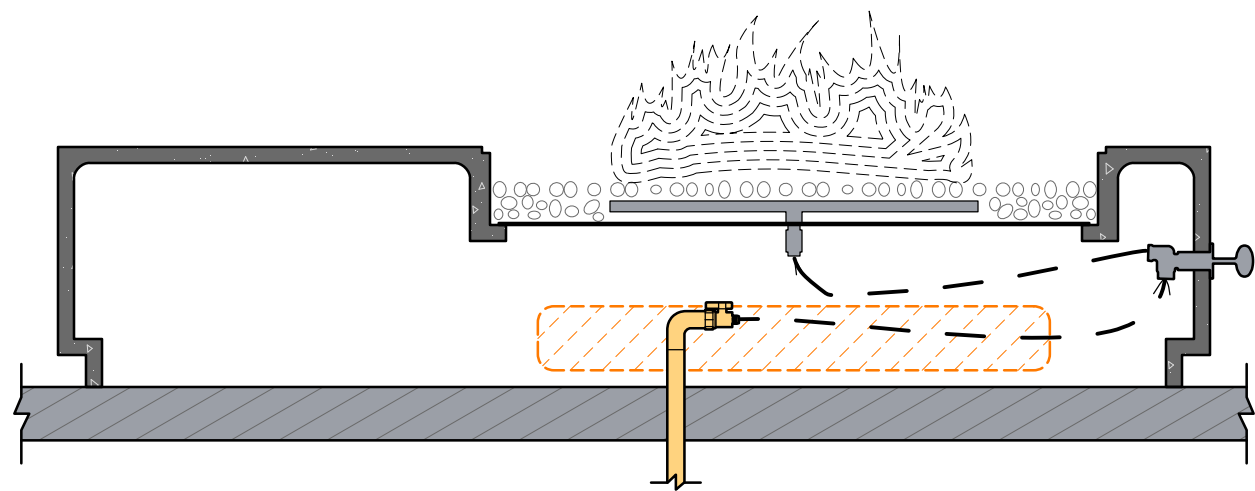
SCAN TO LEARN MORE

AUTHOR AUTHOR  
EGI 09/23

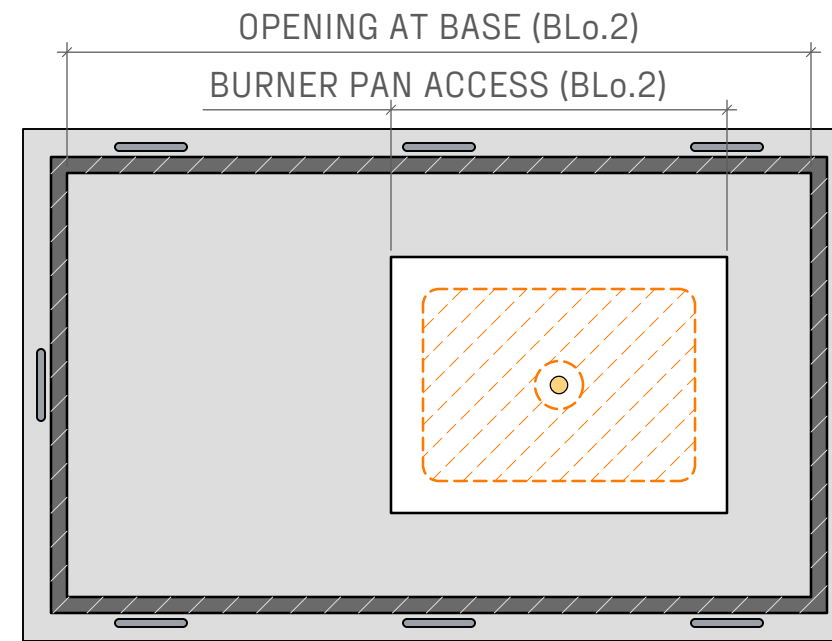
**BLo**

**.2**

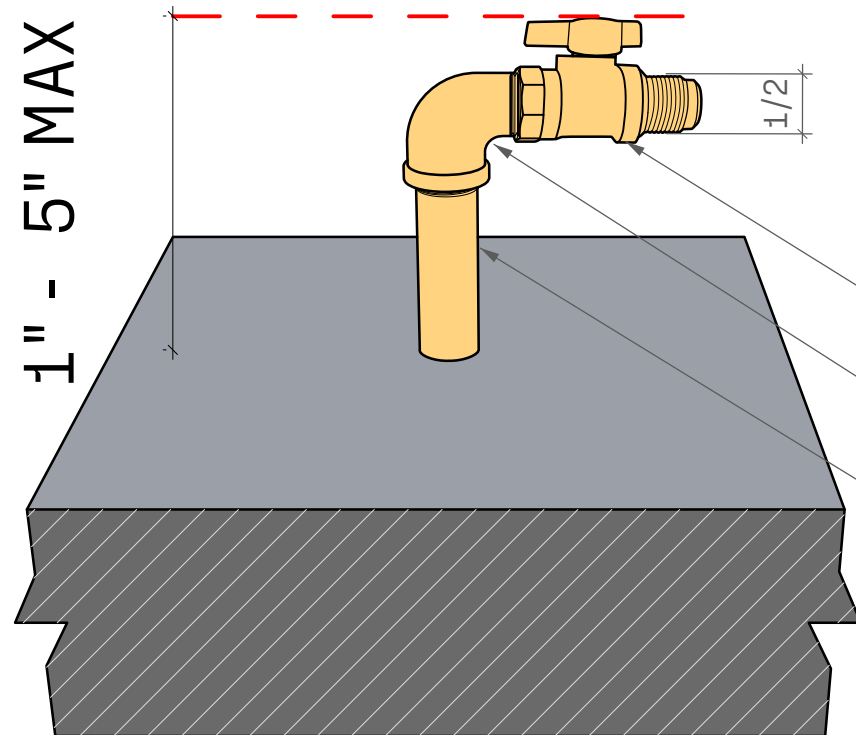
SHEET NO



**BLo.3.1** SIDE SECTION  
SCALE: 1" = 1' - 0"



**BLo.3.2** PLAN VIEW  
SCALE: 1" = 1' - 0"



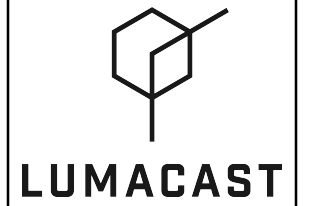
**BLo.3.3** PERSPECTIVE  
SCALE: n/a

- BRASS FNPT X FLARE GAS BALL VALVE: 1/2"
- STREET ELBOW
- GALVANIZED NIPPLE 3/4" - 1" DEPENDING ON BTU SEE PLUMBER

**PLUMBING HARD LINE**

For successful installation, hardline stub up should be capped off between 1" and 5" off finished floor.

Lumacast White Glove Delivery and Installation can only be done on IPS Piping



3261 National Ave  
San Diego, CA 92113  
t: +1 888 710 1026  
www.lumacast.com

**PROJECT INFORMATION**

PROJECT:  
LUMACAST FIRE TABLE  
BLOC offset

DESIGNER:  
LUMACAST

**DRAWING INFORMATION**

DRAWING PACKAGE:  
2D SHOP DRAWINGS  
SHEET CONTENTS:  
HARDLINE DIAGRAM

**MORE INFORMATION**



SCAN TO LEARN MORE

AUTHOR	AUTHOR
EGI	09/23

**BLo**

**.3**

SHEET NO