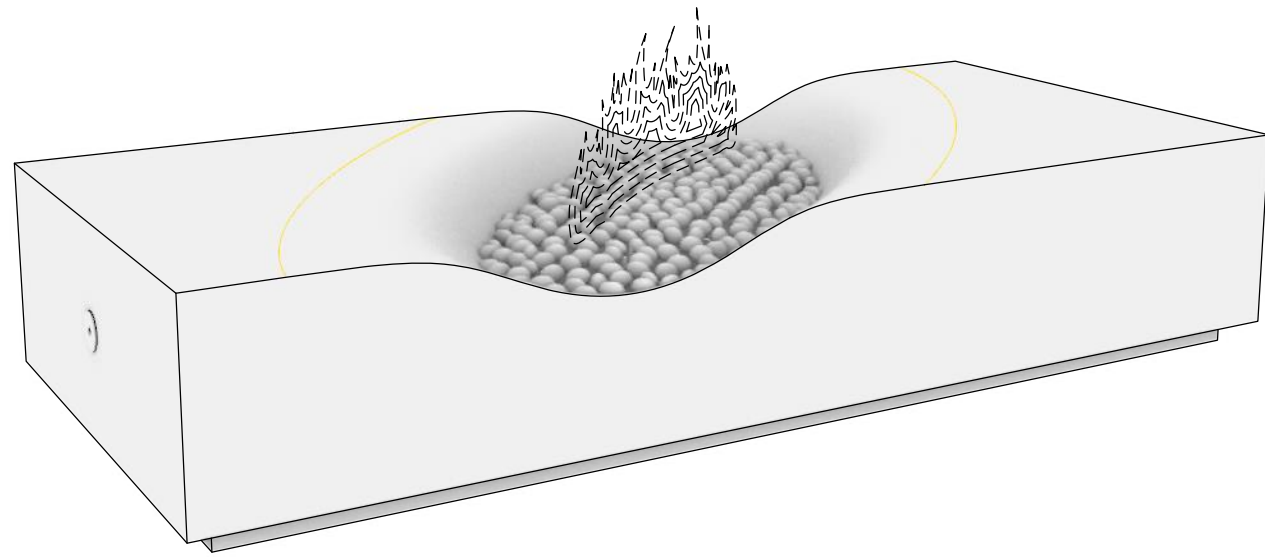
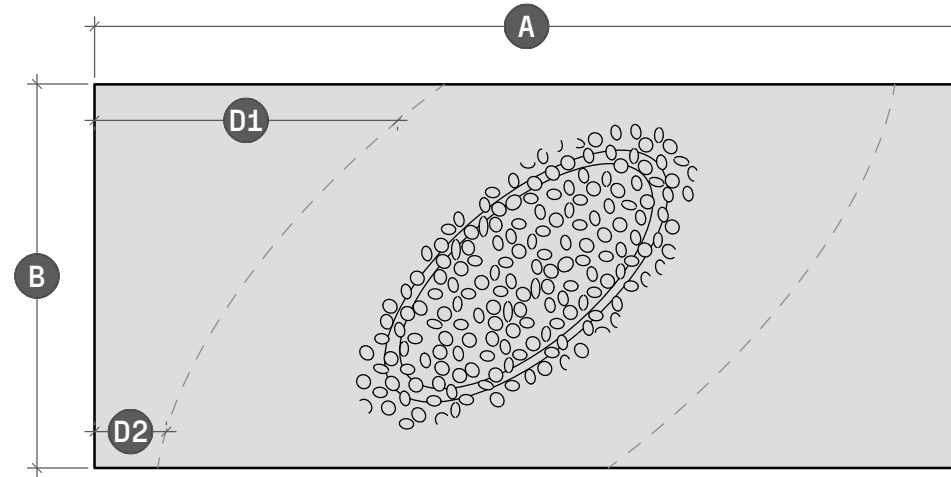


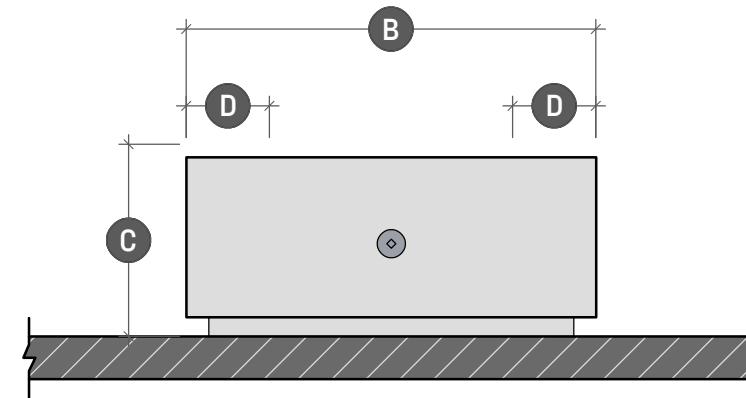
PAOLO FIRE TABLE



PL.1.1 PERSPECTIVE VIEW
SCALE: NA



PL.1.2 PLAN VIEW
SCALE: 1" = 1' - 3"



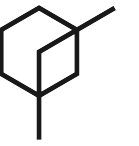
PL.1.3 SIDE ELEVATION
SCALE: 1" = 1' - 3"

	PAOLO 66	PAOLO 72*	PAOLO 82	PAOLO 92
Length	A - 66"	A - 72"	A - 82"	A - 92"
Width	B - 30"	B - 32"	B - 32"	B - 32"
Height	C - 14"	C - 15"	C - 15"	C - 15"
Surface	D - 43">8"	D - 33">10"	D - 37">10"	D - 37">10"

* AVAILABLE IN QUICK SHIP

PAOLO 72

Quick Ship available in Ivory, Pewter, Gull, Charcoal, and Inkwell colors. Quick Ship Orders come with Warming Trends burner and rolled lava infill.



LUMACAST

3261 National Ave
San Diego, CA 92113
t: +1 888 710 1026
www.lumacast.com

PROJECT INFORMATION

PROJECT:
LUMACAST FIRE TABLE
PAOLO

DESIGNER:
LUMACAST

DRAWING INFORMATION

DRAWING PACKAGE:
2D SHOP DRAWINGS
SHEET CONTENTS:
COVER SHEET

MORE INFORMATION



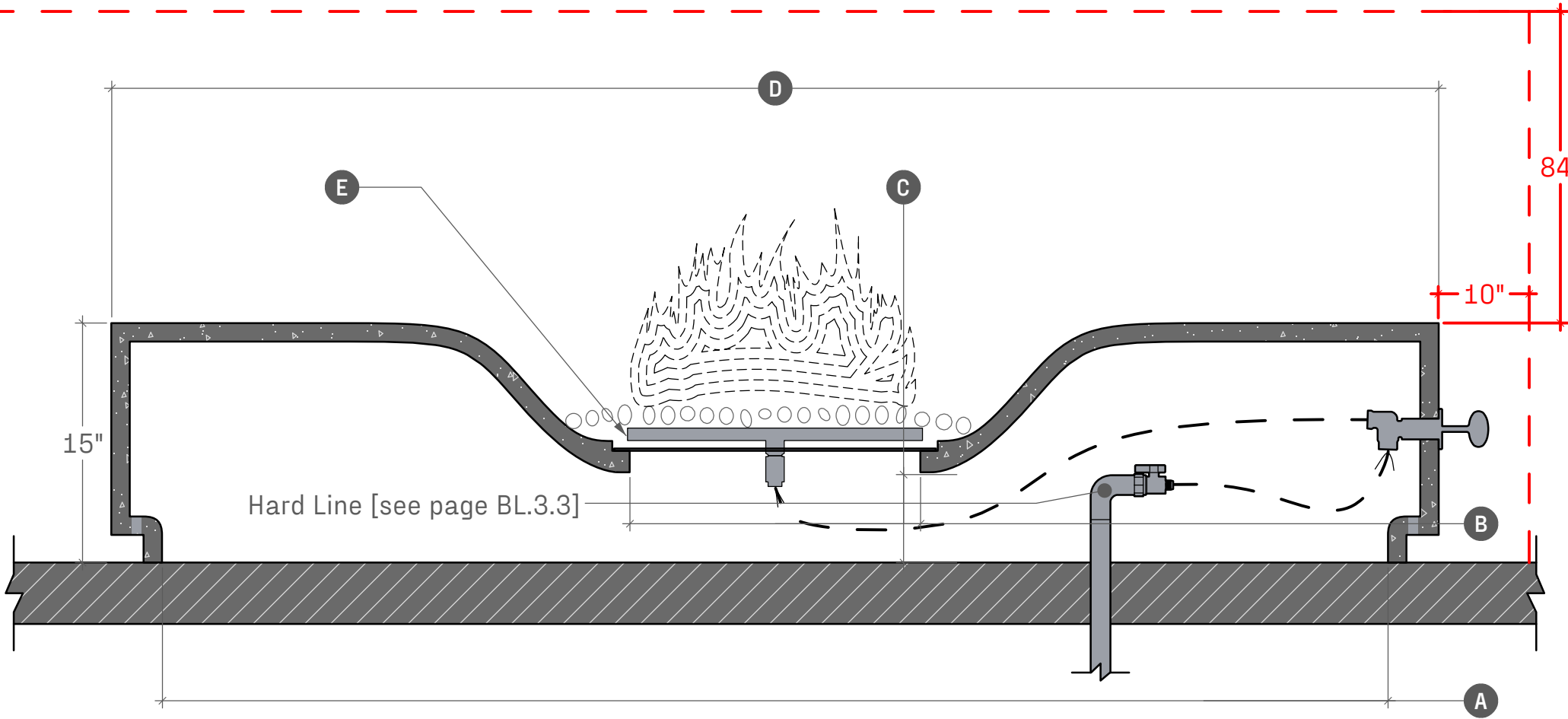
SCAN TO LEARN MORE

AUTHOR	AUTHOR
EGI	01/23

PL.1

SHEET NO

MINIMUM CLEARANCES TO COMBUSTIBLES



PL.2.1 SECTION DETAIL
SCALE: 1" = 0' - 8"

WARNINGS

FOR OUTDOOR USE ONLY

POTENTIAL CARBON MONOXIDE HAZARD

Do not store or use flammable liquids in the vicinity of this product

To be installed by licensed plumber or contractor

TYPICAL CLEARANCES

10" of clearance from the side elevations of the fire table

84" of clearance from the top surface of the fire table

NATURAL GAS SUPPLY

Ensure that the service supplying the fire feature is fitted with a positioned shut off valve that is easily accessible

SUPPLY PRESSURE

Minimum - 3.5" WC

Normal - 7.0" WC

Maximum - 14.0" WC (1/2psi)

Check with local inspector if any further specifications are required for permitted installations

	PAOLO 66	PAOLO 72*	PAOLO 82	PAOLO 92	
Opening at Base	A - 46 1/2"	A - 56 1/2"	A - 66 1/2"	A - 76 1/2"	
Burner Pan Access	B - 36"	B - 46"	B - 56"	B - 66"	
Burner Pan Height	C - 4 3/4"	C - 4 3/4"	C - 4 3/4"	C - 4 3/4"	
Length	D - 66"	D - 72"	D - 82"	D - 92"	
Burner Options	E - - -	E - - -	E - - -	E - - -	
Stainless Steel Burner	66,000 BTU	75,000 BTU	85,000 BTU	95,000 BTU	
Warming Trands Burner	130,000 BTU*	150,000 BTU*	170,000 BTU*	190,000 BTU	
Crated Dimensions	70"x33"x23"	75"x35"x23"	85"x35"x23"	95"x35"x23"	
Shipping Weight	535 LBs	595 LBs	655 LBs	740 LBs	
Shell Weight	355 LBS	375 LBs	400 LBs	455 LBs	



LUMACAST

3261 National Ave
San Diego, CA 92113
t: +1 888 710 1026
www.lumacast.com

PROJECT INFORMATION

PROJECT:
LUMACAST FIRE TABLE
PAOLO

DESIGNER:
LUMACAST

DRAWING INFORMATION

DRAWING PACKAGE:
2D SHOP DRAWINGS
SHEET CONTENTS:
SPECIFICATIONS

MORE INFORMATION

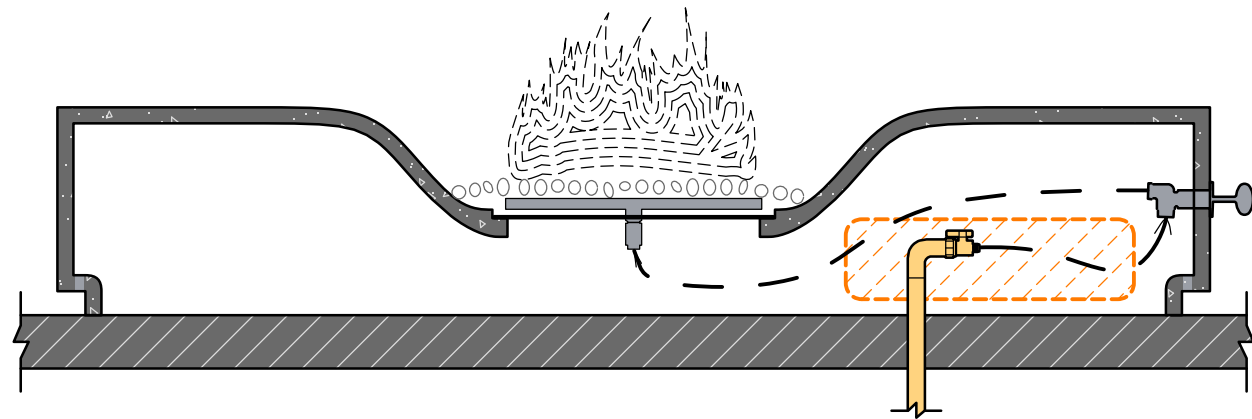


SCAN TO LEARN MORE

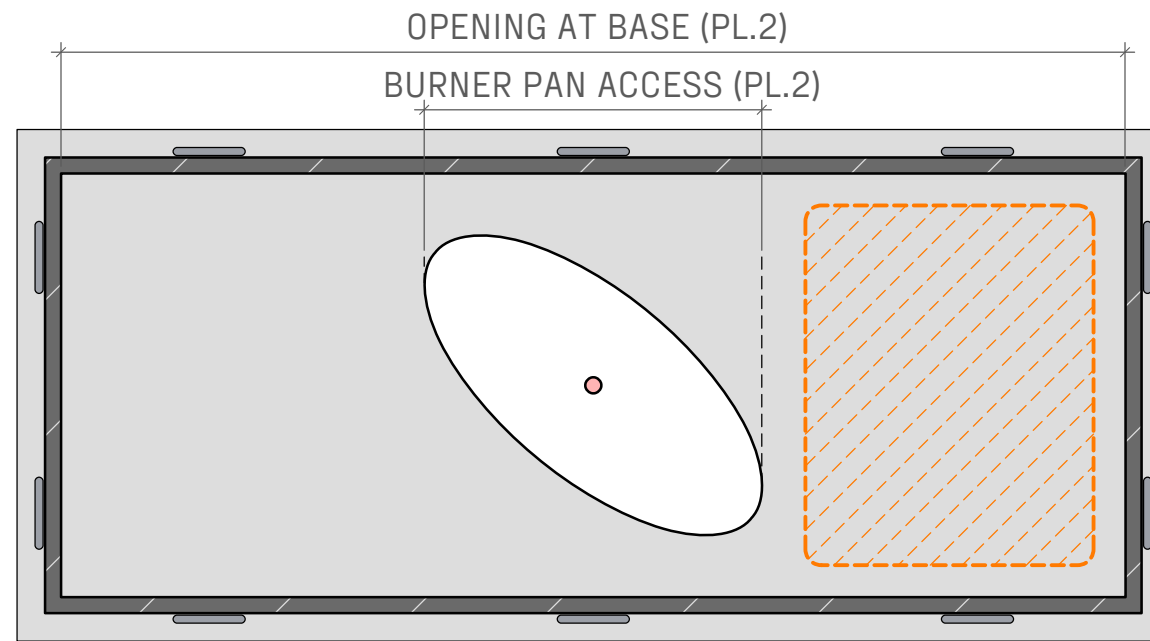
AUTHOR AUTHOR
EGI 01/23

PL.2

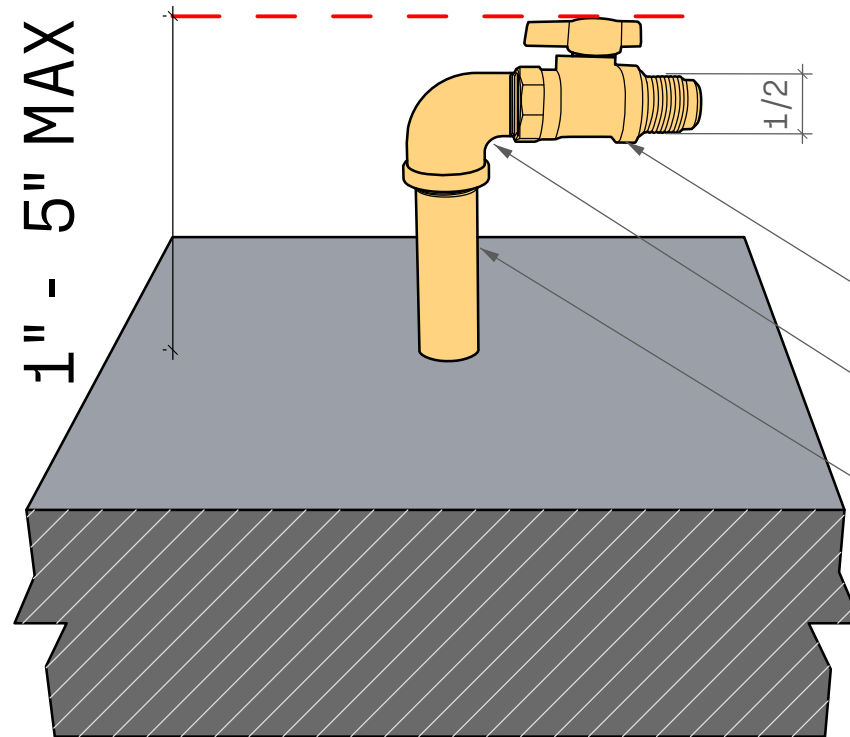
SHEET NO



PL.3.1
SIDE SECTION
SCALE: 1" = 1' - 0"



PL.3.2
PLAN VIEW
SCALE: 1" = 1' - 0"



PL.3.3
PERSPECTIVE
SCALE: n/a

- BRASS FNPT X FLARE GAS BALL VALVE: 1/2"
- STREET ELBOW
- GALVANIZED NIPPLE 3/4" - 1" DEPENDING ON BTU SEE PLUMBER

PLUMBING HARD LINE

For successful installation, hardline stub up should be capped off between 1" and 5" off finished floor.

Lumacast White Glove Delivery and Installation can only be done on IPS Piping

PROJECT INFORMATION

PROJECT:
LUMACAST FIRE TABLE
PAOLO

DESIGNER:
LUMACAST

DRAWING INFORMATION

DRAWING PACKAGE:
2D SHOP DRAWINGS
SHEET CONTENTS:
HARDLINE DIAGRAM

MORE INFORMATION



SCAN TO LEARN MORE

AUTHOR	AUTHOR
EGI	01/23